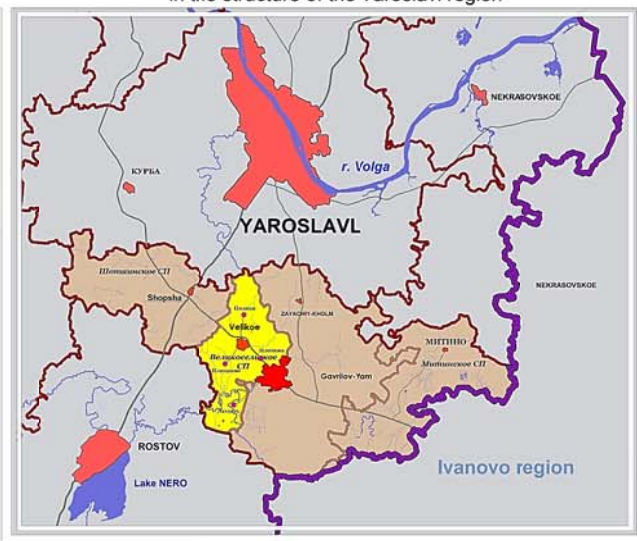
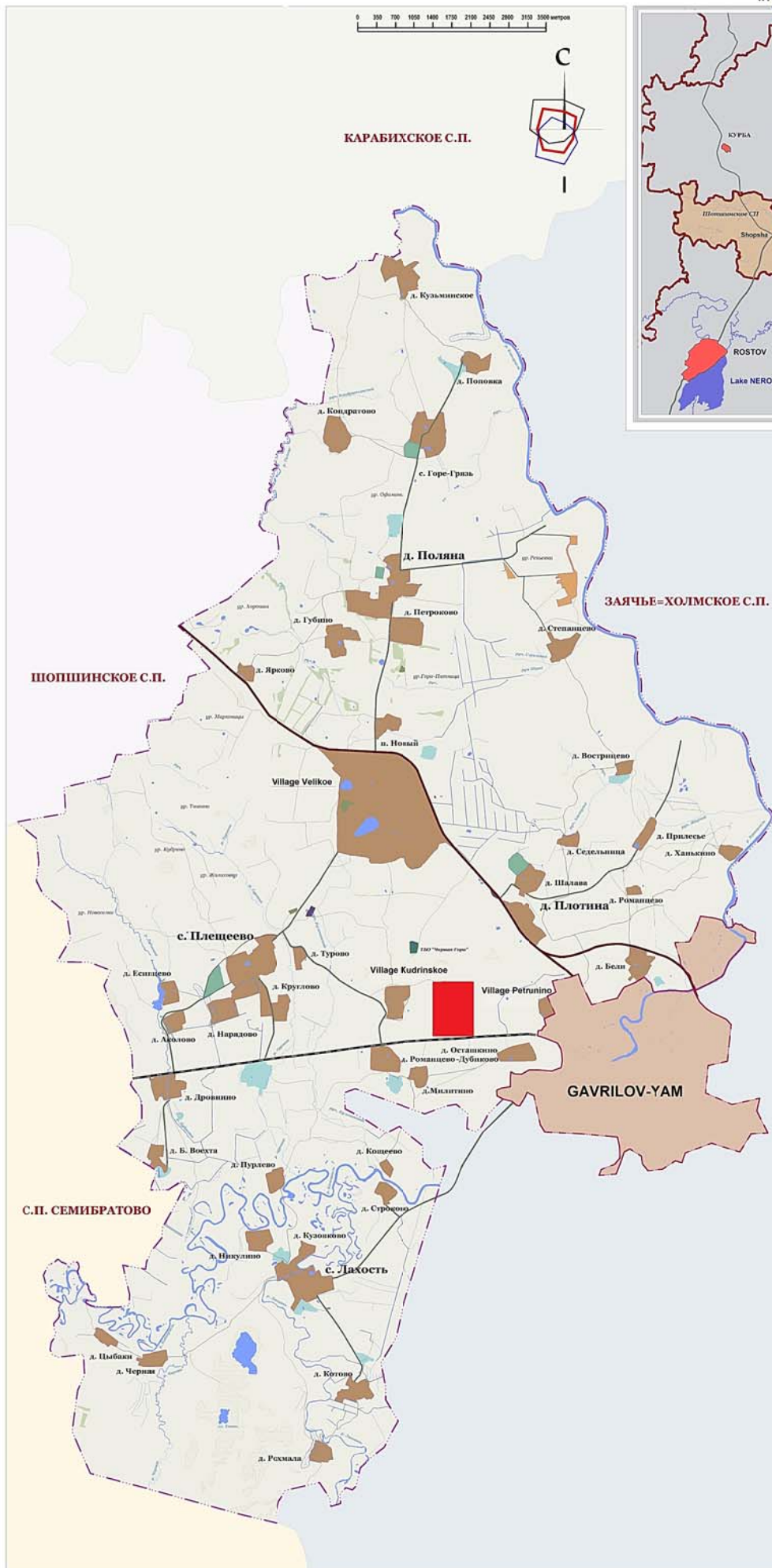


JSC Park INTECH layout plan on the Yaroslavl region, Gavrilov-Yam district surface plan



Scheme on the modern use of the territory (1 cm=35 m)

Situational plan for the settlement of Velikoselsky village
in the structure of the Yaroslavl region



The legend:

- Velikoselskoye rural village borders
- Lands of the urban settlement Gavrilov-Yam and their borders
- Lands of settlements and their borders
- Industrial lands and their borders
- Lands of agricultural industry and their borders
- Lands of forest fund and their borders (protective forests)
- Agricultural lands and their borders
- Water func lands and their borders
- Channels
- Land cemeteries and their borders
- Wetlands
- The Solid Waste Disposal (SWO)
- Land of road transport and their boundaries of regional significance
- Land of road transport and their boundaries of local importance
- Other roads
- Railways
- с. Великое** Administrative center of Rural settlement
- с. Дяхость** Settlements with population of more than 100 people
- д. Котово** Settlements with a population of less than 100 people
- р. Которосль* River names
- JSC Park INTECH